

# The world of fall prevention and protection.

Industry solutions at a glance!

---

## Company..... 3

Innotech Arbeitsschutz GmbH

System overview

360° support

## Buildings & construction industry..... 7

Facades

Wall openings

Flat & pitched roofs

## Producing industry..... 11

Machinery

Silos/containers

Steel industry

Chemical industry

## Infrastructure..... 16

Lorries & trains

Signal poles

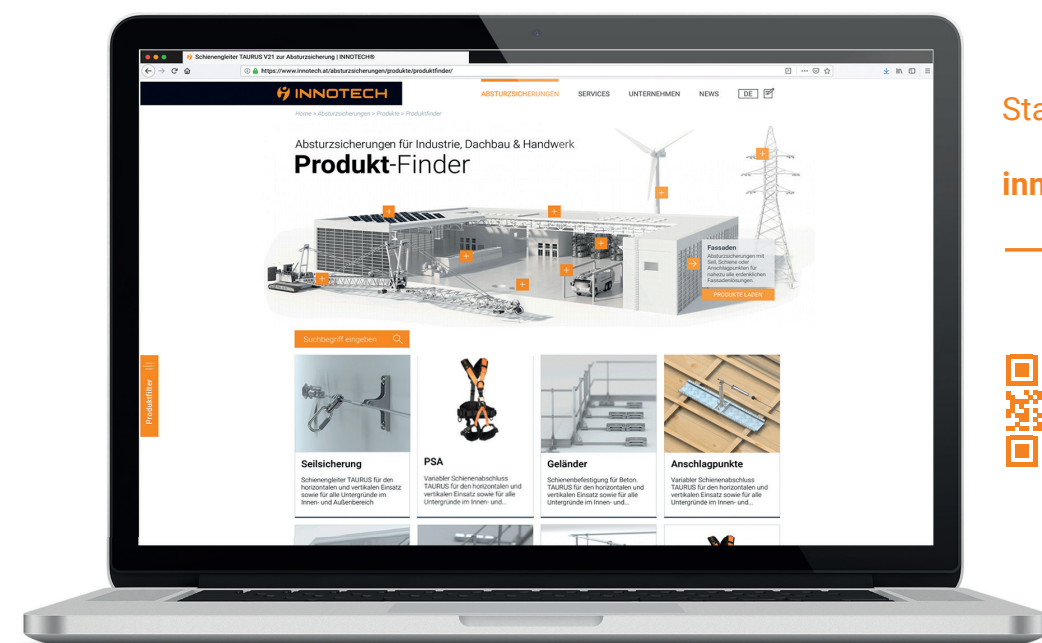
Ships

## Renewable energies..... 20

Solar & PV

Wind turbines

Reservoir dam



Stay up to date.

[innotech.at](https://www.innotech.at)







**European quality  
leaders & full  
service provider**

**In preventing &  
protecting against  
falls from a height**

**150**

**Employees**  
for stellar  
customer service

**200**

**Global partner**  
for reliable  
installation

**€1.5 m**

**Development/year**  
for continued  
innovation

**88%**

**In-house production**  
for superior quality  
and flexibility

**€4 m**

**Warehouse capacity**  
for flexible  
delivery capacity

## INNOTECH ARBEITSSCHUTZ GMBH

As experts in fall prevention (protection) systems with an experience spanning more than 20 years, we marry profound expertise with skills in a variety of areas. Every day, our products and systems safeguard countless people against falls from facades, machinery, rooftops, and much more. Innotech uses the international standards relevant to work safety as the starting point of each solution and constantly drives product innovation forward in various industries.

Occupational safety is not a matter of quantity, but rather of quality. This has been Innotech's philosophy since the company was founded. And, this is also why we invest the bulk of our revenue in our in-house product development, allowing us to keep our finger on the pulse of time and maintaining our ability to meet the quality standards of our customers. We constantly aim to enhance and optimise every little detail of our customer service. Our potential for success is rooted, among other things, in our ability to satisfy our customers. We place the focus of this endeavour primarily on speed and reliability as well as the development of high-quality solutions.

### WE ARE:

#### INNO|vative

- Simple installation of the products
- Customised solutions
- Skills centre

#### Reliable

- Service-oriented
- Project-related consignment
- Prompt delivery

#### Safe

- Made in Austria
- Consistently high product quality
- Outcome-oriented

## SYSTEM OVERVIEW

### Guardrail system **BARRIER** the variable guardrail system

The BARRIER guardrail system is used for protecting edges.

With our 5 versions: VARIO, PARAPET, FLEECE, SKYLIGHT, and ESCAPE ROUTE, very different types of applications can be covered flexibly.

- **Superimposed load system or system installed on the parapet**
- **Quick and easy installation**
- **100% softener-free**



### Rail system **TAURUS** the strong and flexible rail system

TAURUS is an aluminium rail system that has been cleverly conceived and is suitable for use on all substructures. The various system options are a cinch to install, and optionally available curve and bend elements adapt themselves perfectly to the actual constructional conditions.

- **Flexible rail system for every construction form indoors and outdoors**
- **Maximum freedom of movement and ergonomics along the entire length of rail**
- **With corresponding rail slider, also suitable for rope access technology**



### Lifeline system **AIO** the powerful lifeline system that offers a whole host of variety

The use of lifeline systems ensures consistent and passable fall protection. They have end fastenings, including tensioning elements and intermediate cable brackets. The systems are suitable for both horizontal and vertical use.

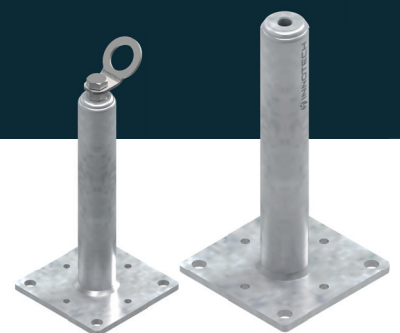
- **Optimum fastening options on all substructures**
- **Accessibility from both sides of the lifeline system without detaching or reconnecting**
- **For use as a restraint, fall arrest, and rescue system**



### **ANCHOR POINTS** secure connection between system/anchorage eye and substructure

Innotech anchor points can accommodate a wide variety of options to connect the substructure with systems or anchorage eyes. When paired with the systems made by Innotech, they deliver optimum performance across various application environments. The combination of anchor point and anchorage eyes creates a single anchor point for the PPE.

- **Establish connections between the most diverse substructures to the Innotech systems TAURUS and AIO**
- **When combined with the EAP-ABP-10-30 abseiling eye, the STA posts are also suitable for abseiling**
- **Can be ordered as sets including fasteners - tested and certified to meet your requirements**



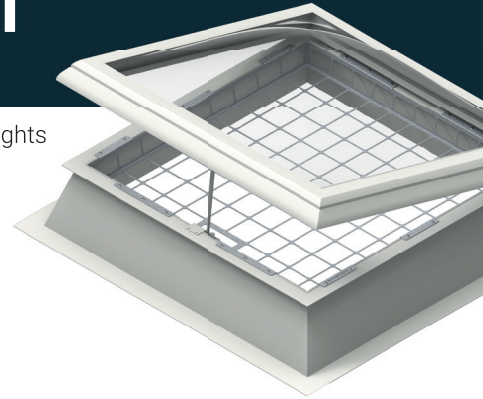


## SYSTEM OVERVIEW

### Skylight protection system **LIGHT** the protection system for skylights and strip lights

To allow rooms beneath flat roofs to be penetrated by enough light, they are often capped by skylights or strip lights. The skylight protection system LIGHT provides a simple and efficient way to protect against falls through these installations without hampering light incidence.

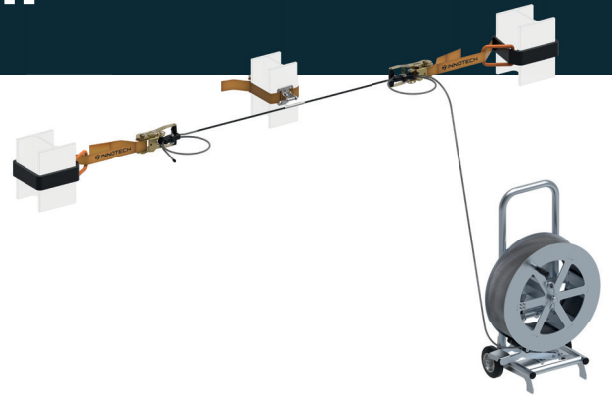
- **Fall-through protection for open and enclosed skylights**
- **High permeability to light and smoke**
- **Individual solutions possible for various types of skylights**



### Temporary protection **TEMP** Safety systems for special situations

These temporary safety systems are a particularly good choice as temporary solutions on construction sites or in industrial environments (steel, façade, hall, and bridge construction, etc.).

- **Mobile lifeline systems and single anchor points for a variety of use cases**
- **Adapts individually to an extensive range of fastening options**
- **Simple and quick installation and removal**



### Personal protective equipment **PPE** secure connection between man and safety system

The PSA STRING 1 harness system is available in Basic, Comfort, and Pro models. All harnesses provide for optimum freedom of movement and guarantee that the user is caught safely in the event of a fall.

- **1 universal size for S to XL**
- **Anchor points with one fall-arrest eyelet on the front side and one on the rear side**
- **Life Safety System (LiSA) allows for digital harness control**



### Fall prevention system for windows **MFS** A safety system for windows and doors

We have developed the modular fall prevention system for windows (MFS) to prevent falls from open windows and wall openings. The fall prevention system for windows can be extended at any time, and adjusted to new requirements – so it's a really flexible safety system.

- **System configurable to individual requirements**
- **Flexible safety system - adjustable to new circumstances/windows**
- **Compact design, therefore simple to stow and transport**



# 360° support

Take advantage of our extensive range of services



### INNO|school

- Expert training
- Personal protective equipment against falls from a height
- Rescue



### Installation & maintenance

- Network of partners across Europe
- Workmanship of the highest quality
- Timely final inspection



### INNO|plan

- Automated parts list generation
- Minimised errors in the planning stage
- Time savings of up to 90%
- Automatic proposal generation



### Planning service

- Planning at no charge
- Minimised risk
- Savings in time



### INNO|doc

- Digital documentation
- Risk reduction
- LiSA (Life Safety System)
- Fast and clean



### Technique of Application

- Customised solutions
- 20 years of experience
- Knowledge database offering solutions

## JOIN US ON A TRIP OF DISCOVERY

The world of fall prevention and protection systems is exciting, but can become confusing quickly as well.

Especially those who have yet to delve deeply into it have a hard time gaining a general idea of the topic at first.

The question as to which safety system is right for what purpose hinges on a variety of factors, including the given situation and the intended area of application.

**INFO:** When selecting a fall protection system, you need to distinguish between collective and individual protection.

## THE RIGHT TYPE OF PROTECTION FOR EVERY APPLICATION

**Collective protection** always applies to multiple people who are present in areas that carry the risk of falls from a height. The goal behind a collective fall protection system is to block access to the unprotected edge, for instance with the BARRIER system. By contrast, **individual protection** is designed as a specific means of protection against falls for individual users (e.g. by means of single anchor points, AIO lifeline systems, and much more). Another major distinguishing factor is the equipment required on the roof. While collective protection does not require any personal protective equipment against falls from a height (PSAgA), this type of equipment is mandatory for individual protection.

Using tried-and-tested solutions as a starting point, we have juxtaposed both standard and custom solutions with typical application scenarios in an effort to provide you with an initial overview. Come join us in discovering the multifaceted world of fall prevention and protection.



# BUILDINGS & CONSTRUCTION INDUSTRY







# FACADES

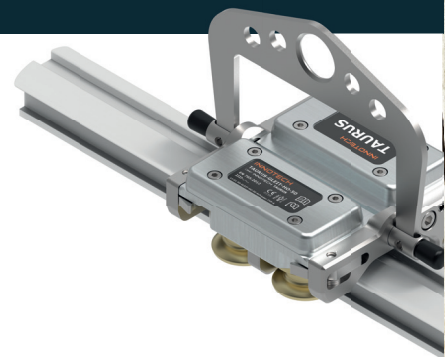
Aesthetics and safety consolidated

## PRODUCTS FOR THIS TYPE OF APPLICATION

Guardrail system BARRIER | Rail system TAURUS | Lifeline system AIO | ANCHOR POINTS | PPE

Urban farming, solar, and photovoltaics. The trend is clearly headed towards making active use of the facades on modern buildings. Cleaning and performing maintenance on facades is quite tricky on account of the widespread shortage of space in the cities, the enormous height of the facades, the cubage of the buildings and other types of challenges. Worse yet, access to the building is often only possible via the roof. A useful tool for overcoming these obstacles is the TAURUS rail system, as its multiple anchor points allow for flexible, and perfectly safe advancement along the length of the entire facade.

- Easy access, even to complex components
- Preservation of the aesthetics thanks to the slender systems and their colour-matching design
- Ergonomic working in any position for maintenance & servicing
- Detailed 3D planning by in-house experts allows for tailor-made solutions



Product tip

**Rail system TAURUS**



Discover now



# WALL OPENINGS

Safe thanks to a flexible system

## PRODUCTS FOR THIS TYPE OF APPLICATION

Modular fall prevention system for windows MFS | ANCHOR POINTS | PPE

The cleaning of window sashes or wall openings involves areas that are difficult to access. This often prompts the user to perform such dicey manoeuvres as leaning out of the window. This poses an immediate fall hazard. The question therefore is how to safeguard this area. The answer is the modular fall prevention system for windows (MFS), a simple and flexible safety solution against falls. The system can be transported from window to window and be adjusted to the size of each window.

- Secured in place with a few easy steps
- Adjustable and expandable at any time
- Low weight for effortless handling
- No planning necessary

Product tip

**Modular fall prevention system for windows MFS**



Discover now







# FLAT & PITCHED ROOFS

The right safety system for every roof

## PRODUCTS FOR THIS TYPE OF APPLICATION

Guardrail system BARRIER | Rail system TAURUS | Lifeline system AIO | ANCHOR POINT | Skylight protection system LIGHT | PPE

In this age of the climate change, green roofs and photovoltaic installations are becoming increasingly popular. But, how do you protect workers properly against falls while they perform maintenance and service on flat and pitched roofs? The horizontal lifeline system AIO has proven its worth as an individual protection device. The system is affordable and ideally suited for pitched roofs in particular. The BARRIER system is recommended as a collective protection solution.

Tip: Safety on a pitched roof can be further enhanced with roof safety hooks (SDH) and the SLING single anchor points.

- Economical solution for any case of application
- Planning & documentation with digital tools
- Planning support free of charge
- Comprehensive and standardised product range



Product tip

**Guardrail system BARRIER**



Discover now



# PRODUCING INDUSTRY

Source: Voestalpine





# MACHINERY

Solutions for every structure

## PRODUCTS FOR THIS TYPE OF APPLICATION

Guardrail system BARRIER | Rail system TAURUS | Lifeline system AIO | ANCHOR POINTS | PPE

Since falls from a height of 1-2 metres are deemed particularly dangerous, companies are required to provide protection starting at a height of 1 metre. The horizontal lifeline system AIO is adjusted specifically for each machine to safeguard the climb comprehensively. The use of alternative options such as single anchor points, a lifeline/rail system above the machine, the TAURUS rail system and the BARRIER system depends on a variety of factors including space, substructure, condition of the machine, etc.

- Allows for wide fastening spacings
- Adjustable to individual requirements
- Enhancement of machinery thanks to a holistic safety concept



Product tip

**Lifeline system AIO**



Discover now



# SILOS/CONTAINERS

Secured access and descent

## PRODUCTS FOR THIS TYPE OF APPLICATION

Guardrail system BARRIER | Rail system TAURUS | Lifeline system AIO | ANCHOR POINTS | Temporary protection TEMP | PPE

Silos and containers need to be maintained and loaded as well as unloaded on a regular basis. This makes it necessary to mount them from the outside and work your way down on the inside. The height of the container and the limited space that is available to attach the safety system quickly turn this endeavour into a major challenge. The system that ensures a safe vertical ascent and descent along silos is the VERT-SET-50. It comes with a rail piece that serves as the base support for the attachment of various types of ladders. If the container is pitched, the TAURUS all-round system is the solution that works best in many situations.

- **Comprehensively safeguarded ascent, descent and entry**
- **Work in comfort thanks to highly ergonomic systems**
- **Efficient installation and servicing thanks to standardised systems**

Product tip

**Lifeline system AIO**



Discover now







# STEEL INDUSTRY

Systems for extraordinary loads

## PRODUCTS FOR THIS TYPE OF APPLICATION

Guardrail system BARRIER | Rail system TAURUS | Lifeline system AIO | ANCHOR POINTS | Temporary protection TEMP | PPE

Cranes are of vital importance in steel production. Regardless of whether they are used for transporting various materials to the blast furnaces or for other types of applications. Maintaining & servicing cranes requires that they be walked on regularly, which necessitates professional safeguarding of maintenance walkways and crane runways. A system that has been specially designed for this purpose is the IND lifeline system, which can also be used temporarily.

It boasts a system distance of up to 30 m length, a steel cable with a diameter of 10 mm, and a maximum cable pretension of 300 kg.

- Suitable for low fall heights
- Wide fastening spacings
- Permanent and temporary solutions



Product tip

**Lifeline system AIO**



Discover now



# CHEMICAL INDUSTRY

Premium products for any type of challenge

## PRODUCTS FOR THIS TYPE OF APPLICATION

Guardrail system BARRIER | Rail system TAURUS | Lifeline system AIO | ANCHOR POINTS | Temporary protection TEMP | PPE

A corrosive, i.e. abrasive, atmosphere and deposits of foreign substances pose a tremendous challenge to the chemical industry and the material used in this sector. It can even lead to the downfall of industrial climbers performing maintenance and inspections in high security areas if the material deteriorates under the adverse conditions and loses its ability to guarantee complete safety. You will not be able to defy these conditions unless you use materials of the highest possible quality.

This is why the TAURUS rail system is recommended both as a standard solution and as a custom solution that can be tailored specifically to special environments (e.g. wide span lengths).

- Comprehensively safeguarded ascent, descent and transition
- Work in comfort thanks to highly ergonomic systems
- Efficient installation and servicing thanks to standardised systems
- Holistic concept & solution

Product tip

**Rail system TAURUS**



Discover now





# INFRASTRUCTURE





# LORRIES & TRAINS

Safe loading and unloading

## PRODUCTS FOR THIS TYPE OF APPLICATION

Guardrail system BARRIER | Rail system TAURUS | Lifeline system AIO | ANCHOR POINTS | PPE

Scores of trains and lorries traverse our roads and railways every day to haul goods and commodities from A to B. Stationary loading points are increasingly becoming fall hazards during loading and unloading. In these locations, the AIO lifeline system as an overhead system and the TAURUS system work exceedingly well as fall prevention (protection) systems. The systems allow the users to stay perfectly safe, yet flexible while working on top of vehicles, and the TAURUS can even be used for safe attachment directly at the vehicle.

- Safety plus optimum freedom of movement
- Minimised risk and prevention of work accidents
- Optimum fastening options on all substructures



Product tip

**Lifeline system AIO**



Discover now



# POLES

Perfectly secured from the ground up

## PRODUCTS FOR THIS TYPE OF APPLICATION

Rail system TAURUS | Lifeline system AIO | ANCHOR POINTS | PPE

Poles dominate every landscape as far as the eye can see and serve an important purpose in every field of application in which they are used. To ensure that they remain in perfect working order, they require various servicing work and repairs as well as an annual inspection. And, it is necessary to provide for a safe ascent/descent during these operations. Both can be achieved to the best possible extent with the vertical lifeline system VERT-SET-80. Since it is fastened to the pole by clamping, the system does not cause structural changes or damage of any kind. Since the system components (cable loop and end lock) stay within clear view, the time inside the hazard zone is shortened substantially.

- Perfectly secured from the ground up
- Effortless attachment of the system by clamping
- Clearly visible system components for quick and simple control
- Consistent cable tension thanks to cable pretension

Product tip

**Lifeline system AIO**



Discover now







# SHIPS

Safely shielded from wind and weather

## PRODUCTS FOR THIS TYPE OF APPLICATION

Rail system TAURUS | ANCHOR POINTS | PPE

Cruise ships, military vessels, container ships, etc. set sail for the seven seas of this world every day. To keep them from harm, the glass fronts and the conning bridge must be cleared from dirt and salt water residue on a regular basis. The tasks involved to do so pose two challenges. Firstly, it is necessary to provide for safe access to these surfaces. And, secondly, the users require a system that keeps them protected from wind and weather. The TAURUS rail system bands all of these features together and virtually becomes one with the ship thanks to its slender rail design and surface anodisation.

- Easy access even to hard-to-reach areas
- Continuous safety across multiple levels
- Sleek design and space-saving fall prevention (protection) system
- Systems that are easy to install and use



Product tip

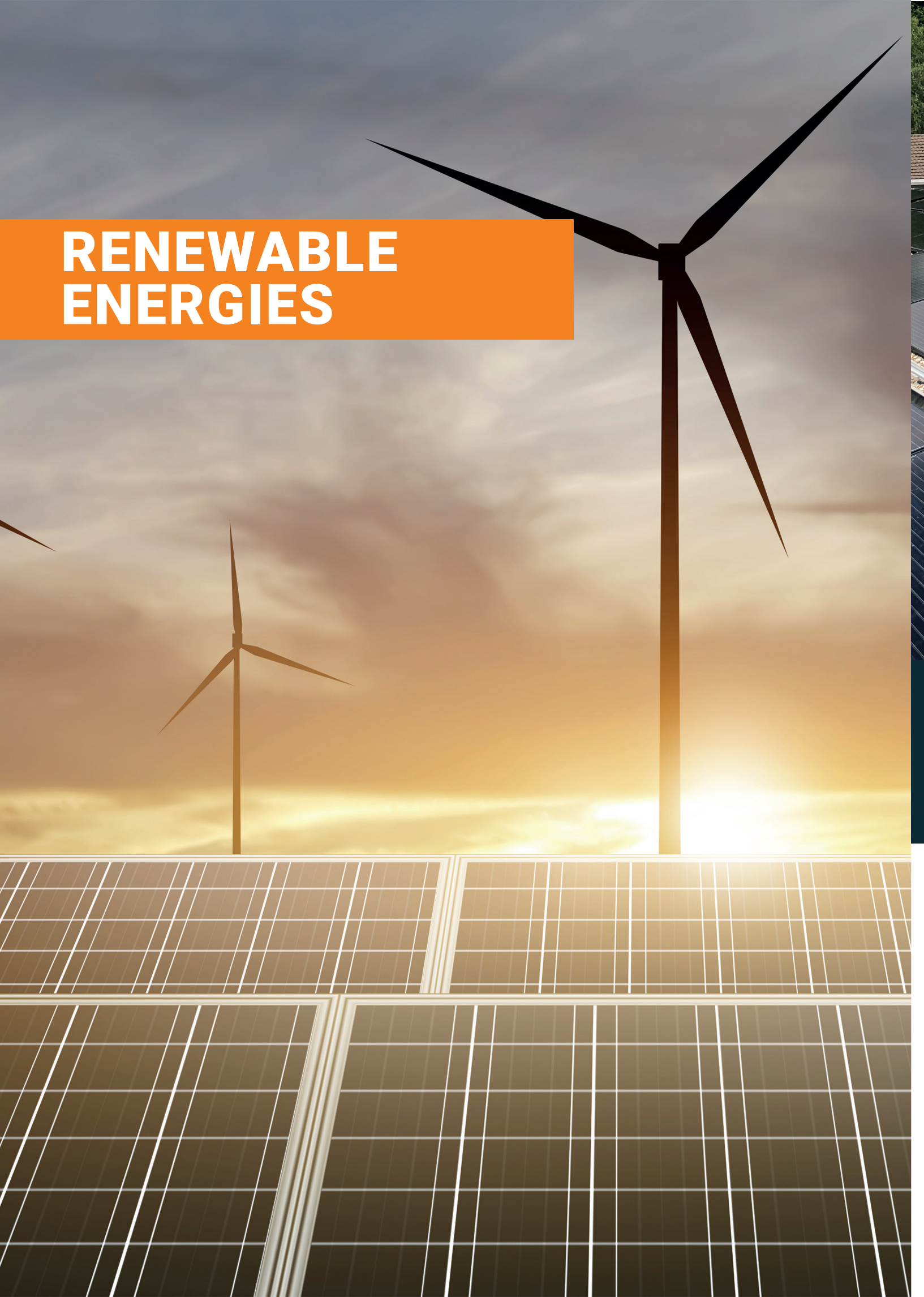
**Rail system TAURUS**



Discover now



# RENEWABLE ENERGIES







# SOLAR & PV

Maximum safety at maximum efficiency

## PRODUCTS FOR THIS TYPE OF APPLICATION

Rail system TAURUS | ANCHOR POINTS | PPE

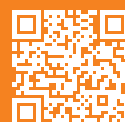
Solar power is counted among the “clean sources of energy”. As a testimony to the outright explosive surge of environmental awareness in recent years, solar and photovoltaic installations on rooftops & façades have become ubiquitous. These systems must, however, be subjected to regular servicing. As the modules are located close to the edge of the roof to utilise as much of the available roof surface as possible, there is an elevated risk of falls. The TAURUS-K2 proves to be ideally suited for these cases as it provides safety wherever it is needed. Professional bending devices can be used to adjust this system to any radius directly on site.

- The existing PV installation can be used for the installation of the fall prevention system
- No roof penetration thanks to the combination of PV substructure and fall prevention (protection) systems
- Planning support free of charge



Product tip

**Rail system TAURUS**



Discover now



# WIND TURBINES

A smooth transition in perfect safety

## PRODUCTS FOR THIS TYPE OF APPLICATION

Guardrail system BARRIER | Rail system TAURUS | Lifeline system AIO | ANCHOR POINTS | PPE

The upswing in demand for electrical power has made it increasingly important to harness energy from alternative sources. This is why the number of wind turbines in Austria has mushroomed over the last few years. These installations are in need of regular servicing, exposing the maintenance personnel to particular fall hazards during the ascent and the descent. These hazards are frequently due to pedestals interrupting the ascent, which makes detaching a vertical system inevitable. In these scenarios, the TAURUS rail system provides for a smooth transition from vertical to horizontal use - without the need to detach the system.

Tip: Our Pro harness is particularly well suited for this application.

- No detaching or reconnecting at the points of transition (horizontal, vertical)
- Flexible systems that can be adapted to the contour of the wind turbine
- Can be installed on a large variety of substructures



Product tip

**Personal protective equipment PPE**



Discover now







# RESERVOIR DAM

Safety concepts for complex requirements

## PRODUCTS FOR THIS TYPE OF APPLICATION

Rail system TAURUS | Lifeline system AIO | ANCHOR POINTS | PPE

These giants in the world of renewable energy production have a look that is unmistakable. They are made of many, mostly narrow, vertical shafts and stairs of different inclinations. To ensure that work steps like measurements, checks or inspection rounds at reservoir dams can be completed in safety, it is essential to devise a holistic safety and rescue concept that matches the conditions on site. This also includes perfect freedom of movement, ease of use and maximum flexibility for the users. The AIO lifeline system encapsulates all of these requirements and covers wide span lengths to boot. In addition, the TAURUS system is ideal for more complex applications.

- Optimum protection against falls from a height
- Flexible and individual adjustment of the systems to the structural requirements
- Economical solutions thanks to comprehensive planning and configuration



Product tip  
**Rail system TAURUS**



Discover now





**Head office**

INNOTECH® Arbeitsschutz GmbH  
Laizing 10, A-4656 Kirchham, Austria  
T: +43 7619 22122-0  
office@innotech.at | www.innotech.at

**Swiss subsidiary**

INNOTECH® Arbeitsschutz AG  
Seestrasse 14b, CH-5432 Neuenhof, Switzerland  
T: +41 56 416 90 40  
office@innotechag.ch | www.innotechag.ch

**German subsidiary**

INNOTECH® Arbeitsschutz GmbH  
In der Steinwiese 5, D-57074 Siegen, Germany  
T: +49 271 234194-0  
office@innotech.de | www.innotech.de