



Guardrail system
BARRIER

Guardrail system for machinery

Guardrail system for machinery



+43 7619 22 1 22 - 0
+49 271 23 41 94 - 0
+43 564 16 9 042 - 0

office@innotech.at
www.innotech.at

Laizing 10
A 4656 Kirchham

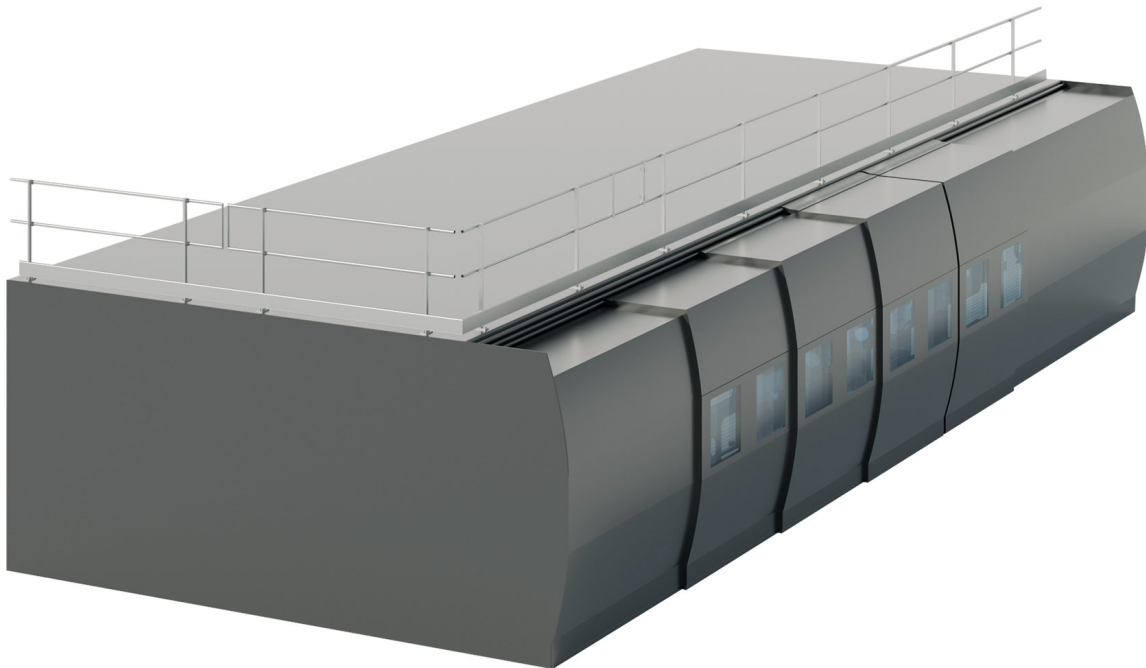
BARRIER-MACHINE-SAFEGUARDING-SYSTEM

Guardrail system for machinery

The BARRIER MACHINE SAFEGUARDING guardrail system is used wherever fall edges on machinery or in an industrial environment have to be secured. The guardrail system is so flexible that it is possible to individually solve the various requirements in different areas of industry. In order to fulfil both safety and aesthetic requirements in the best possible way, various installation options and foot units are available. For example, there is also the option to fold the system up and down completely, and this is particularly practical in industry. The simple installation of the guardrail system ensures that it can be deployed rapidly.

BENEFITS

- Certified solution for securing fall edges in the area of machinery.
- Variable system, thanks to the different installation options provided by the foot units.
- Visual barrier indication through use of signal colours is possible thanks to the various coating options for the guardrails.
- Practical to deploy, because the system can be folded down completely when not in use, and expanded again for use.



Currently no updates for this product

Technical product description

The guardrail system consisting of aluminium and stainless steel impresses because of its weather resistance and robustness.
The guardrail, together with the various individual components, such as the specially developed foot units, posts, booms, and concrete weights, combine to create a harmonised system.
Depending on the existing corner layout, the posts and booms can be laid out differently.



TECHNICAL BENEFITS

Reduction of installation effort

From a financial aspect, the wide post separations of 1,8 m have a positive effect on the overall installation process.

Completely foldable

If the appropriate foot unit and the matching posts are used, then the guardrail can be folded down completely, so that it is no longer visible. If the guardrail's protective function is required again, then it can be expanded once more.

Secured access

By fitting the optional BARRIER-T30 door set, optimally secured access to and exit from a machine are made possible.

State of the art certification:

EN ISO 14122-3:2016

Components

BARRIER-Z11

Rating plate BARRIER-Z11 for guardrail system

Material: Aluminium composite, plastic
for marking a BARRIER system



BARRIER-A22

Adapter BARRIER-A22

Substructure: concrete, steel construction
Effective height: 137 mm
Material: aluminium, stainless steel (AISI 304)
for fastening the post BARRIER-S21 to the top of the parapet



BARRIER-F20

Toe board BARRIER-F20

Height x width x length: 170 x 20 x 3000 mm
Material: aluminium
For use when no parapet higher than 150mm is available!



BARRIER-F21

Toe board bracket BARRIER-F21

Height x width: 25 x 48 mm
Packing unit: 2 items
Material: aluminium, stainless steel (AISI 304)
for attachment of the BARRIER-F20 toe board to the BARRIER-S21 post



BARRIER-F23

Toe board connection set BARRIER-F23

Packing unit: 1 items
Material: aluminium, stainless steel (AISI 304)
for connecting two BARRIER-F20 toe boards



BARRIER-S21-1050

Standard post, parapet, BARRIER-S21-1050

Length: 1050 mm
Material: aluminium, aluminium-zinc, stainless steel
Standard post for System ATTIKA including pipe retainer.



BARRIER-T30

Door set BARRIER-T30

Material: aluminium, stainless steel (AISI 304)
Opening 800 mm, anchorage direction fixed, not selectable (right hand door)
For load-bearing implementation, 4 x BARRIER-V20 weights required for each door side!



BARRIER-R11

Aluminium pipe BARRIER-R11

Diameter x wall thickness x length: 36 x 2.5 x 3000 mm
Material: aluminium



BARRIER-R21

Linear tie BARRIER-R21

Material: aluminium, stainless steel (AISI 304)
for connecting two BARRIER-R11 pipes



BARRIER-R31

Corner tie BARRIER-R31

Material: aluminium, stainless steel (AISI 304)
Create a corner with two pipes BARRIER-R11
Angle free adjustable!



BARRIER-R41

Wall tie BARRIER-R41

Substructure: concrete or steel construction
Material: aluminium, stainless steel (AISI 304)
Angle free adjustable!



BARRIER-R51

End seal BARRIER-R51

Material: aluminium, stainless steel (AISI 304)
end seal of two rail pipes BARRIER-R11
Projection of the rail pipe max. 500 mm!



Components

BARRIER-R70

Pipe bracket BARRIER-R70

Material: zinc-aluminium, stainless steel
pipe retainer fo fix the pipes BARRIER-R11



BARRIER-R91

End cap BARRIER-R91

Diameter x thickness: 36 x 2 mm

Packaging unit: 2 pieces

Material: plastic

end cap for rail pipe BARRIER-R11

Projection of the rail pipe max. 350 mm!



Accessory items

BARRIER-A10

Adapter BARRIER-A10

Mountable on: concrete or steel construction

System pitch: 90°, 75°, 60°

Material: aluminium, stainless steel (AISI 304)
for fastening the post BARRIER-S13 to the inside of the parapet



BARRIER-A11

Adapter BARRIER-A11

Mountable on: concrete or steel construction

System pitch: 90°, foldable

Material: aluminium, stainless steel (AISI 304)

for fastening the post BARRIER-S13 to the inside of the parapet



BARRIER-A31

Spacer bracket BARRIER-A31

Mountable on: concrete or steel construction

Material: aluminium, stainless steel (AISI 304)

2 different adjustment ranges (65 mm - 105 mm or 100 mm - 145 mm)

for BARRIER-A10 and BARRIER-A11





Head office
INNOTECH® Arbeitsschutz GmbH

Laizing 10
A 4656 Kirchham
T +43 7619 22 1 22 - 0
office@innotech.at
www.innotech.at

Branch Office Switzerland
INNOTECH® Arbeitsschutz GmbH

Seestraße 14b
CH 5432 Neuenhof
T +41 56 41 69 040
office@innotechag.ch
www.innotechag.ch

Branch Germany
INNOTECH® Arbeitsschutz GmbH

In der Steinwiese 5
D 57074 Siegen
T +49 271 23 41 94 - 0
office@innotech.de
www.innotech.de