



Lifeline system

AIO

Non-passable

All-in-one lifeline system, non-passable



+43 7619 22 1 22 - 0

+49 271 23 41 94 - 0

+43 564 16 9 042 - 0

office@innotech.at

www.innotech.at

Laizing 10

A 4656 Kirchham

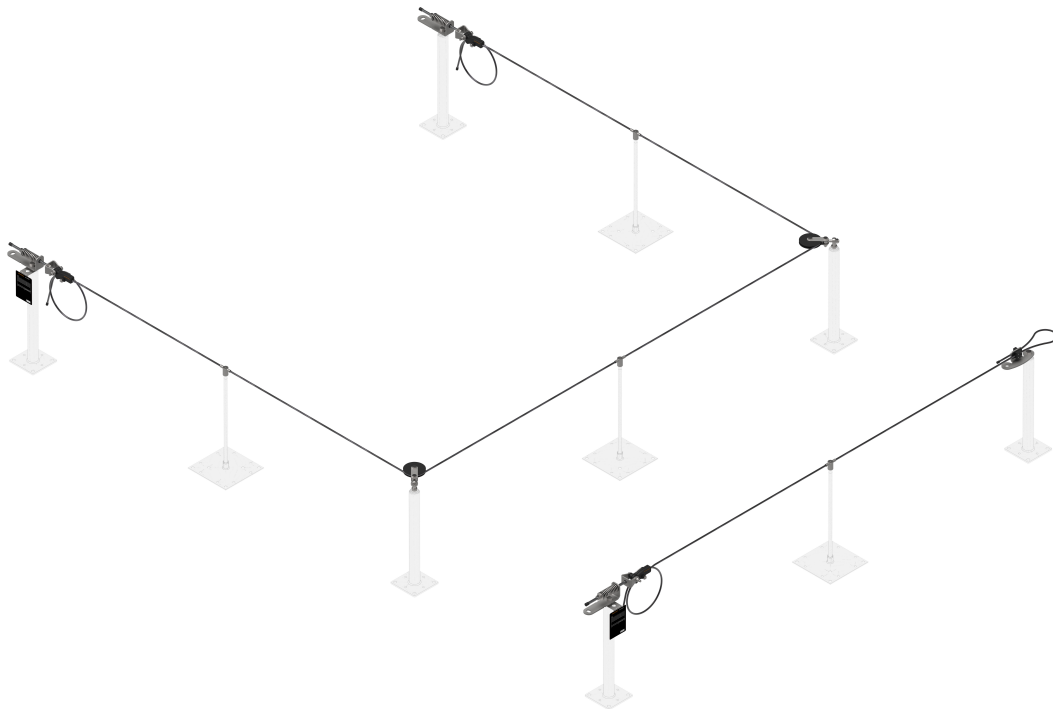
AIO-LIFELINE-SYSTEM NON-PASSABLE

All-in-one lifeline system, non-passable

The AIO LIFELINE SYSTEM NON-PASSABLE i is used wherever a horizontal surface must be protected. Regardless whether along roofs, facades, or in industry, it provides optimum protection against falls. Not only does it adapt to complex building structures, it can also be attached optimally to a wide range of substructures. The modular, flexible system components ensure easy, defect-free installation. Because the lifeline system consists of non-passable individual components, attachment and detachment to/from the system is necessary.

BENEFITS

- Efficient installation through wide fastening distances up to 15 m.
- Easy and above all fast installation thanks to the end lock with integrated energy absorber.
- Simple system without sliders. However, a Y-lanyard is required for the use and safety of the person using the system.
- Fall protection and the rope access method in just one system, thanks to the option to combine selected posts with abseiling positions.



Currently no updates for this product

Technical product description

The system's principle component is our stable and proven 8 mm stainless steel cable. The cable, together with the various individual components, such as the non-passable intermediate brackets and curve elements, and the end lock with integrated shock force absorption, combine to create a harmonised system. For secured movement in the lifeline system, a Y-lanyard is required. This connects the person using the harness to the lifeline system.



TECHNICAL BENEFITS

Reduction of installation effort

Depending on the substructure, the fastening distance can be up to 15 m. From a financial point of view, the wide fastening distances have a positive effect on the overall installation process.

Simple checking of readiness for use

The easily visible cable fastening allows a precise assessment of the cable clamping, and thus a simple inspection of the lifeline system's readiness for use (end lock with viewing window).

Variable corner formation

For the AIO LIFELINE SYSTEM, NON PASSABLE, the AIO-EDLE-15 curve element allows a variable, non-passable corner formation, based on the angle.

State of the art certification:

EN 795 TYP C und E

CEN/TS 16415

Components

Rating plate TYP-50 for lifeline systems

Material: stainless steel V4A (AISI 316), plastic for identifying a horizontal lifeline system in combination with the end lock AIO-ENDS-50/51
Various fastening options!



AIO-TYP-51

Rating plate TYP-51 for lifeline systems

Material: stainless steel (AISI 316), plastic for identifying a self-supporting horizontal lifeline system in combination with the end lock AIO-ENDS-50/51
Various fastening options!



AIO-ENDS-50

End lock ENDS-50 A2 for lifeline systems

Material: stainless steel (AISI 304), aluminium (anodised)

This end lock is for a non passable cable span with integrated shock force absorption!
For a cable span with a corner set, a second AIO-ENDS-50 is required, for a straight cable span an AIO-ENDS-51 is required!



AIO-ENDS-51-A2

End lock ENDS-51 A2 for lifeline systems

Material: stainless steel (AISI 304), aluminium (anodised)

This end lock is for a non-passable cable span with integrated shock force absorption!
To be used only in combination with AIO-ENDS-50, for a straight cable span!



AIO-SEIL-30

Stainless steel cable SEIL-30 for lifeline system

Dimensions: Ø 8 mm (7 x 7)

Breaking load: 37 kN

Material: stainless steel (AISI 316)
tested for INNOTECH lifeline systems



AIO-SZH-13

Intermediate bracket SZH-13 for lifeline systems

Mountable on: STA, BKS, SAND, VARIO, SYST, QUAD, etc.

Connection: thread M16

Material: stainless steel V2A (AISI 304)
Not passable with the slider.



AIO-EDLE-14

Curve EDLE-14 for lifeline system

Mountable on: AIO-STA, AIO-STX, AIO-FALZ, AIO-SAND, AIO-VARIO, AIO-SYST, etc.

Pass-over capability: inside corners

Connection: thread M16

Material: stainless steel (AISI 304), plastic for setting up a variable corner set



AIO-EDLE-15

Curve EDLE-15 for lifeline system

Mountable on: AIO-STA, AIO-FALZ, AIO-SAND, AIO-VARIO, AIO-SYST, etc.

Application: inside corners

Connection: thread M16

Material: stainless steel (AISI 304), plastic for setting up a variable corner set



H10006667

Y-lanyard PSA-EQUIP-17

Material: PA-tubular tape

Length: 2 m

strong Y-lanyard as fall protection system



Accessory items

STA-10

Unipost STA-10 for all systems

Mountable on: concrete, wood, trapezoidal supporting sheet, steel construction, etc.

Post heights: 300/400/500/600 mm, Ø 48 mm

Base plate dimensions: 150 x 150 x 8 mm

Material: galvanised steel, stainless steel (AISI 316)



STA-12

Unipost STA-12 for all systems

Mountable on: concrete, hollow concrete slab, trapezoidal supporting sheet, steel construction, etc.

Post height: 400 / 600 / 800 mm, Ø 48 mm

Base plate dimensions: 300 x 300 x 8 mm

Material: galvanised steel



STA-16

End and corner post STA-16 for all systems

Mountable on: concrete (anchoring depth at least 100 mm), steel construction, etc.

Post height: 200 / 500 mm, Ø 48 mm

Base plate dimensions: 150 x 192 x 8 mm

Material: galvanised steel

(use 4 pcs. of adhesive anchor bolts M12)

Special lengths upon request!



QUAD-11

Unipost QUAD-11

Mountable on: concrete, hollow core concrete, wood, trapezoidal supporting sheet

Post heights: 300/400/500/600 mm, Ø 16 mm

Base plate dimensions: 235 x 235 x 4 mm

Material: stainless steel (AISI 304)



QUAD-13

Unipost QUAD-13

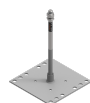
Mountable on: concrete, trapezoidal sheet

Post heights: 300/400/500/600 mm, Ø 16 mm

Base plate dimensions: 212 x 212 x 5 mm

Packaging unit: 1 piece / 10 pieces

Material: coated steel (RAL 7004), stainless steel (AISI 304)



EAP-QUAD-13-END

End/corner point QUAD-13-END

Substructure: Concrete, trapezoidal supporting sheet

Post dimensions: 400/600 mm, Ø 16 mm

Base plate size: 212 x 212 x 5 mm

Material: coated steel (RAL 7004), stainless steel V2A (AISI 304), aluminium



VARIO-45

Universalpoint VARIO-45 for all systems

Mountable on: flat roofs up to 5° with parapet

Dimensions: 1536 x 1536 mm

Weight: approx. 21 kg (total weight 43 kg, packaging included)

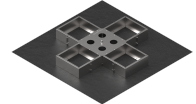
Final weight: c. 384 - 499 kg

Can be filled with: concrete or 12/15 pcs. of concrete slabs (50 x 50 x 5 cm, 49 x 49 x 5 cm)

or 16/20 pcs. of concrete slabs (50 x 50 x 3,8 cm)

Material: stainless steel (AISI 304)

Without roof perforation!



EUE-101-STA-10

Set items STA-10 incl. BEF-104-A4

Substructure: Concrete

Post dimensions: 400/600/800 mm, Ø 48 mm

Base plate size: 150 x 150 x 8 mm

Material: galvanised steel, stainless steel V2A (AISI 304)



ZST-101-QUAD-11

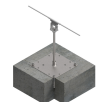
Set items QUAD -11 incl. BEF-104-A4

Substructure: Concrete

Post dimensions: 400/600 mm, Ø 16 mm

Base plate size: 235 x 235 x 4 mm

Material: stainless steel V2A (AISI 304)



EUE-102-STA-12

Set items STA-12 incl. BEF-107

Substructure: Hollow slab

Post dimensions: 400/600/800 mm, Ø 48 mm

Base plate size: 300 x 300 x 8 mm

Material: galvanised steel



ZST-102-QUAD-11

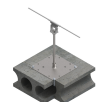
Set items QUAD-11 incl. BEF-103

Substructure: Concrete, hollow concrete slab

Post dimensions: 400/600 mm, Ø 16 mm

Base plate size: 235 x 235 x 4 mm

Material: stainless steel V2A (AISI 304)



EUE-201-STA-10

Set items STA-10 incl. BEF-201

Substructure: Wood

Post dimensions: 400/600/800 mm, Ø 48 mm

Base plate size: 150 x 150 x 8 mm

Material: galvanised steel, stainless steel V4A (AISI 316)

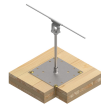


Accessory items

ZST-201-QUAD-11

Set items QUAD-11 incl. BEF-209-A2

Substructure: Solid wood ceiling
Post dimensions: 400/600 mm, Ø 16 mm
Base plate size: 235 x 235 x 4 mm
Material: stainless steel V2A (AISI 304)



ZST-201-STA-10

Set items STA-10 incl. BEF-201

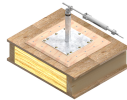
Substructure: Wooden rafters (min. 16 x 16cm)
Post dimensions: 400/600 mm, Ø 48 mm
Base plate size: 150 x 150 x 8 mm
Material: galvanised steel, stainless steel V4A (AISI 316)



EUE-202-1-STA-12

Set items STA-12 incl. BEF-210-A2

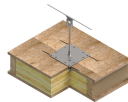
Substructure: OSB
Post dimensions: 400/600/800 mm, Ø 48 mm
Base plate size: 300 x 300 x 8 mm
Material: galvanised steel



ZST-202-1-QUAD-11

Set items QUAD-11 incl. BEF-307

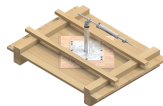
Substructure: Wood lightweight roof, OSB
Post dimensions: 400/600 mm, Ø 16 mm
Base plate size: 235 x 235 x 4 mm
Material: stainless steel V2A (AISI 304)



EUE-203-STA-12

Set items STA-12 incl. BEF-210-A2

Substructure: Wood - rough formwork
Post dimensions: 400/600/800 mm, Ø 48 mm
Base plate size: 300 x 300 x 8 mm
Material: galvanised steel



ZST-203-QUAD-11

Set items QUAD-11 incl. BEF-208

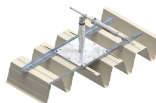
Substructure: Wood - rough formwork
Post dimensions: 400/600 mm, Ø 16 mm
Base plate size: 235 x 235 x 4 mm
Material: stainless steel V2A (AISI 304)



EUE-301-STA-12

Set items STA-12 incl. BEF-307 and BEF-307-1

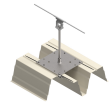
Substructure: Trapezoidal supporting sheet
Post dimensions: 400/600/800 mm, Ø 48 mm
Base plate size: 300 x 300 x 8 mm
Material: galvanised steel



ZST-301-QUAD-11

Set items QUAD-11 incl. BEF-307

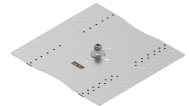
Substructure: Trapezoidal supporting sheet
Post dimensions: 400/600 mm, Ø 16 mm
Base plate size: 235 x 235 x 4 mm
Material: stainless steel V2A (AISI 304)



SAND-01-A2

Universal point SAND-01-A2

Substructure: Trapezoidal sheet
Material: Steel, aluminium
Material thickness: Steel min. 0.6 mm, aluminium min. 0.7 mm
Width profile: 250 to 414 mm
Base plate size: 430 x 415 x 1.5 mm
Material: Stainless steel V2A (AISI 304)
 At the same time, order suitable fastening material (steel BEF-309/aluminium BEF-306).



SAND-13-A2

Universal point SAND-13

Substructure: Trapezoidal sheet,
material: Steel
Material thickness: min. 0.5 mm
Width profile: 210 to 330 mm
Base plate size: 300 x 365 x 2 mm
Material: Stainless steel V2A (AISI 304)
 At the same time, order suitable fastening material (steel 0,5-3mm BEF-306 / steel 0,6-1,5mm BEF-310).
 Use as intermediate bracket, variable height adjustment up to 50 mm (VL-20-50), to increase the spacing between the lifeline system and the roof cladding.



FALZ-45

Universal point FALZ-45

Mountable on: Standing seam roofs
Material: aluminium, copper, titanium-zinc alloy, stainless steel, galvanised steel, etc.
Material thickness: min. 0.6 mm
Width of profile: 370 - 640 mm or 520 - 790 mm
 Without roof perforation!



FALZ-25

FALZ-25 intermediate point for lifeline systems

Mountable on: standing seam roofs
Material: aluminium, copper, titanium-zinc alloy, stainless steel, galvanised steel, etc.
Material thickness: min. 0.6 mm
Width of profile: 370 640 mm or 520 790 mm
Material: stainless steel (AISI 304)
 Without roof perforation!
 Only for use as intermediate cable bracket in AIO lifeline system!
 Variable height adjustment up to 50 mm (VL-20-50) to increase the spacing between the lifeline system and the roofing!

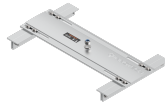


Accessory items

SYST-01

Universal point SYST-01

Mountable on: (Double-) standing seam roofs
Material (material thickness): steel (min. 0.5 mm), aluminium (min. 0.7 mm)
Width of profile: 410 - 610 mm
Material: aluminium, stainless steel (AISI 304)
 Pre-assembled and without roof perforation!
 Not suitable for copper roofs !



SYST-04

Universal point SYST-04

Mountable: system roofs similar to INTERFALZ
Material (material thickness): steel (min. 0.5 mm), aluminium (min. 0.7 mm)
Width of profile: 305 - 333 mm or 400 - 500 mm
Material: aluminium, stainless steel (AISI 304)
 Pre-assembled and without roof perforation!
 For Germany, a national technical approval (abZ for construction products in the scope of the federal state building codes) and a mark of compliance (compliance mark as per the Compliance Mark ordinance) are necessary for this product.



AIO-SYST-20

Universal point SYST-20

Mountable on: trapezoidal covering sheet
Material: steel, aluminium
Material thickness: min. 0.5 mm
Width of profile: 475 - 695 mm
Material: aluminium, stainless steel (AISI 304)





Head office
INNOTECH® Arbeitsschutz GmbH

Laizing 10
A 4656 Kirchham
T +43 7619 22 1 22 - 0
office@innotech.at
www.innotech.at

Branch Office Switzerland
INNOTECH® Arbeitsschutz GmbH

Seestraße 14b
CH 5432 Neuenhof
T +41 56 41 69 040
office@innotechag.ch
www.innotechag.ch

Branch Germany
INNOTECH® Arbeitsschutz GmbH

In der Steinwiese 5
D 57074 Siegen
T +49 271 23 41 94 - 0
office@innotech.de
www.innotech.de